

# RXL 603

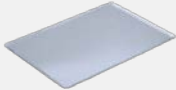
*Bakery oven*

**MAGNIBÉRIA**  
EQUIPAMENTO E SERVIÇOS PARA HOTELARIA



Ref. 710538



| TECHNICAL CHARACTERISTICS  | EQUIPAMIENTO-FUNCIONES  |
|--|---|
| <p><b>Electric power</b> 3900 W</p> <p><b>Max temperature</b> 250 °c</p> <p><b>Weight</b> 45 kg</p> <p><b>Voltage</b> 230 V-50/60 Hz</p> <p><b>Connection</b> single phase Schuko</p> <p><b>Internal dimensions</b> (W)450x(D)470x(H)285 mm</p> <p><b>External dimensions</b> (W)820x(D)800x(H)480 mm</p> <p><b>Humidifier</b> (ref. 710539) 1.395 €</p> <p><b>Change door opening</b></p> | <ul style="list-style-type: none"><li>• End of cycle alarm</li><li>• Safety thermostat</li><li>• 0-60 Minute timer</li><li>• Non-stop mode</li><li>• Interior light</li><li>• Door switch</li><li>• Rotation inverter</li><li>• Standard equipment 3 wire trays</li></ul> |
|  | CAPACITY  |
|  | <p><b>3 trays 600x400</b></p> <p><b>3 trays GN 1/1</b></p>   |

# RXL 603

*Specific accessories*

**MAGNIBÉRIA**  
EQUIPAMENTO E SERVIÇOS PARA HOTELARIA



## RX 60/40 Stand

Ref. 710549



(W)810x(D)700x(H)850 mm

## RX GN1/1 Stand

Ref. 710550



(W)810x(D)700x(H)850 mm

## Wheels

Ref. 710286



Wheeled option

## Fumes condenser kit

### RX SERIES

Ref. 710551

(W)170x(D)70x(H)400 mm

### RX H2O SERIES

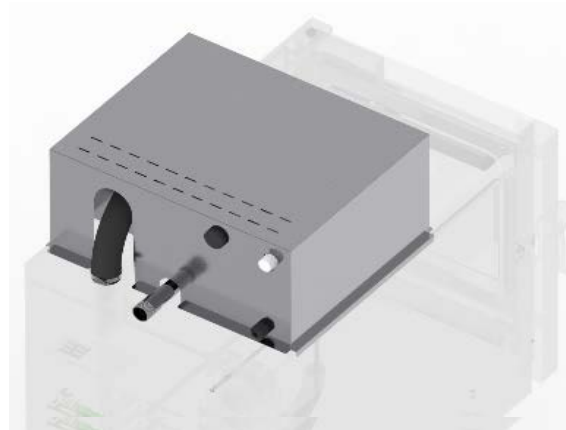
Ref. 710552

(W)720x(D)85x(H)450 mm

### RX DUO SERIES

Ref. 710553

(W)580x(D)120x(H)180 mm



## RX 60/40 Superposition kit

Ref. 710556



(W)820x(D)800x(H)40 mm